

JVC

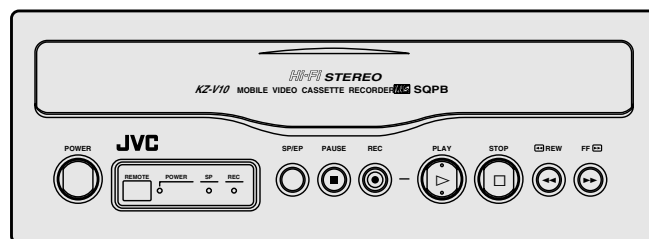
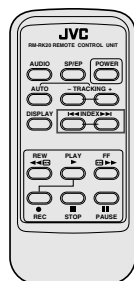
SERVICE MANUAL

MOBILE VIDEO CASSETTE RECORDER

KZ-V10J/MV

Area Suffix

J ---- Northern America



Hi-Fi
VHS

Comparison table

Item	KZ-V10J	KZ-V10J/MV
Remote controller	Used	Not used

This service manual is composed only of the different points.
Please refer to the issued service manual (Issue No.49466 KZ-V10J) for other items.

Contents

Safety precaution	1-2
Difference table	1-2
Section 5 Parts list	5-1
5.1 Cabinet and chassis assembly <M2>	5-1
5.2 Mechanism assembly <M4>	5-3,4

Safety precaution

CAUTION Burrs formed during molding may be left over on some parts of the chassis. Therefore, pay attention to such burrs in the case of performing repair of this system.

The following table indicate main different points between models KZ-V10J and KZ-V10J/MV.

ITEM	MODEL	KZ-V10J	KZ-V10J/MV
INSTRUCTIONS		USED	NOT USED
WARRANTY CARD		USED	NOT USED
RM CABLE		USED	NOT USED
REMOTE CONTROLLER		USED	NOT USED

The following tables indicate different parts number between models KZ-V10J and KZ-V10J/MV.

Packing and accessory assembly <M1>

REF. NO	ITEM	MODEL	KZ-V10J	KZ-V10J/MV
101	PACKING CASE		LP30421-001A	LP30421-011A
105	RM CABLE		QAM0113-001	—
106	IR RECEIVER		LV40177-001A	—
107	SHEET(A),X2		LP40176-001A	—
108	SHEET(B),X2		LP40177-001A	—
109	BATTERY,X2		R6PRPA-2ST	—
110	POLY BAG		QPC02503530P	—
△ 111	INST BOOK		VNN3802-631	—
△ 112	INST BOOK(CONNECTION MANUAL)		VNN3802-T631	—
113	SER.NET CARD		BT-20071B	—
114	USERS CARD		VNA1001-030	—
115	TOLL FREE CARD		BT-20137	—
116	WARRANTY CARD(USA ONLY)		BT-51009-3	—
	WARRANTY CARD(CANADA ONLY)		BT-52001-4	—
△ 117	INST BOOK(CAUTION)		LPT0040-002A	—
118	REMOTE CONTROLLER		LP30180-003B	—
118A	BATTERY CASE		LP40068-001A	—
122	BRACKET,X2		LP30137-001B	—
124	CAUTION		LPT0040-003A	—

Cabinet and chassis assembly <M2>

REF. NO	ITEM	MODEL	KZ-V10J	KZ-V10J/MV
△ 150	FRONT PANEL ASSY		LP20101-001H	*LP20101-001K
150A	CASSETTE DOOR		LP20156-001C	*LP20156-001D
150B	TORSION SPRING		PQ46448	*PQ46448-2
154	SPECIAL SCREW, TOP/BOTTOM		LP40173-001A,(X2)	#LP40173-001A,(X4)
159D	COLLAR ASSEMBLY		LP40028-001A	*LP40572-001A
159E	ROTOR ASSEMBLY		QAR0002-001	*QAR0002-003
159J	SCREW,X2		QYSPSP2606Z	*QYSPSPH2606Z
159M	COMPRES.SPRING		LP30004-005A	*LP30004-014A
164	SCREW,CASS.HOUSING		SPST2606Z,(X2)	*SDST2610Z,(X1)
167	SCREW,X2,CASSETTE HOUSING		SDST3008Z	*QYTDST3010Z
168	SPRING COVER,CASS.HOUSING		LP40154-001A,(X2)	—
170	SCREW,SWITCH BRACKET		SDSP2003Z	*QYSPSPT2035M
173	SCREW,CASSETTE HOUSING		—	*SPST2606Z
174	WASHER		—	*WLS2000N
175	LOCK WASHER,X5		—	*WLS3000N
176	CASSETTE HOUSING ASSY		PUS29724E	*PUS29724G
176B	SPRING COVER,CASS.HOUSING		—	*LP40154-001A
WR2	FFC WIRE,FRONT BOARD		PW30802-1412	*WJT0016-001A

Notes : Mark — is not used.

Mark : * reference model was also changed.

Mark : # is missing for KZ-V10J.

Mechanism assembly <M4>

△ REF. NO	ITEM	MODEL	KZ-V10J	KZ-V10J/MV
6	TENSION ARM ASSEMBLY		PQ46303A-8	*PQ46303B-8
17	SPACER		PQM30018-79	*PQM30018-76
21	REEL ASSEMBLY(TAKE UP)/REEL DISK ASSEMBLY(TAKE UP)		PQ46562B	*PQ46551B
24	CLUTCH UNIT(SUPPLY)		PQ46316C-6	*PQ46316F
26	GUIDE ARM ASSEMBLY		PQ46325C-9	*PQ46325D
35	POLE BASE ASSEMBLY(SUPPLY)		PQ46595B-5	*PQ46595C
36	POLE BASE ASSEMBLY(TAKE UP)		PQ46331C	*PQ46331F
43	CONTROL BRACKET		PQ35138-1-2	*PQ35138-3
45	CONTROL PLATE		LP10004-001C	*LP10004-001E
48	SCREW		SPST2606Z,(X1)	*SPST2606Z,(X2)
50	LEVER ASSEMBLY		PQ46342D-10	*PQ46342B-10
56	SLIDE PLATE		PQ11659-1-14	*PQ11659-2
61	LOADING MOTOR		PU60628-3-2	*QAR0023-001
68	CAPSTAN MOTOR		PU61487-2-3	*PU61487-2-6
69	SUB DECK ASSEMBLY		PQ46347D-17	*PQ46347F-17
73	TENSION SPRING,CAPSTAN BRAKE		PQM30001-384101	*LP30003-005A
74	CHANGE ARM ASSEMBLY		PQ46353A-2	*PQ46353B
76	TENSION SPRING		—	*PQM30001-386
79	LID GUIDE		PQ35030-1-5	*PQ35030-3
83	ROTARY ENCODER		PU61432-1-1	*PU61432-1-2
84	CONTROL BRACKET 2		—	*PQ35217-1-2
99	MAIN DECK ASSEMBLY		PQ21680L-23	*PQ21680M-24

Main board assembly <O3>

△ REF. NO	ITEM	MODEL	KZ-V10J	KZ-V10J/MV
PW1	MAIN BOARD ASSY		PB11079D1	PB11079H1
D951	ZENER DIODE		—	*UZ5.6BSB
△ R931	FUSIBLE RESISTOR		QRZ9005-330X	←
R951	RESISTOR		—	*QRE141J-152
C48	E CAPACITOR		QETC0JM-477	*QETN0JM-477
C703	E CAPACITOR		QETC1CM-106	*QETN1CM-106
C907	E CAPACITOR		QETC1CM-476	*QETN1CM-476
C911	E CAPACITOR		QETC1CM-476	*QETN1CM-476
C915	E CAPACITOR		QETC1CM-476	*QETN1CM-476
C916	E CAPACITOR		QETC1CM-476	*QETN1CM-476
C917	E CAPACITOR		QETC1CM-107	*QETN1CM-107
C920	E CAPACITOR		QETC1CM-476	*QETN1CM-476
△ TB1	TERMINAL BOARD ASSY		LP30151-001B	LP30151-005A
OT3	SCREW,J4		SPSF3010M,(X1)	*SPSF3010M,(X2)
OT5	#500SPACER0.01,X2		—	*PU59915-105
OT6	#500SPACER0.01,X701		—	*PU59915-105
OT7	#500SPACER0.007,X702		—	*PU59915-107
OT8	#500SPACER0.01,R951		—	*PU59915-105
WR1	WIRE ASSY		—	*P210-20A2A2K0K0
WR4	WIRE ASSY		—	*P210-17A2A2K0K0
WR11	WIRE ASSY,R951		—	*QUB321-08A4A6
B1	MG RESISTOR		—	*NRSA02J-0R0X
B2	MG RESISTOR		—	*NRSA02J-0R0X
B3	MG RESISTOR		—	*NRSA02J-0R0X
B13	MG RESISTOR		—	*NRSA02J-0R0X
B403	MG RESISTOR		—	*NRSA02J-0R0X
B708	MG RESISTOR		—	*NRSA02J-0R0X
B709	MG RESISTOR		—	*NRSA02J-0R0X
B801	MG RESISTOR		—	*NRSA02J-0R0X
B901	MG RESISTOR		—	*NRSA02J-0R0X
B1303	MG RESISTOR		—	*NRSA02J-0R0X
B1309	MG RESISTOR		—	*NRSA02J-0R0X
B1311	MG RESISTOR		—	*NRSA02J-0R0X

Front board assembly <28>

△ REF. NO	ITEM	MODEL	KZ-V10J	KZ-V10J/MV
PW2	FRONT BOARD ASSY		PB11079D2	*PB11079D2-01
R1211	RESISTOR		QRE141J-332Y	*QRE141J-683Y
R1212	RESISTOR		QRE141J-332Y	*QRE141J-683Y
CN1201	FFC CONNECTOR,(1-14)MAIN		QGF1207F1-14	*QGF1208F1-14

SW. board assembly <36>

△ REF. NO	ITEM	MODEL	KZ-V10J	KZ-V10J/MV
PW4	SW BOARD ASSY		PB11079D4	*PB11079D4-01

LED board assembly <90>

△ REF. NO	ITEM	MODEL	KZ-V10J	KZ-V10J/MV
PW3	LED BOARD ASSY		PB11079D3	*PB11079D3-01

Notes : Mark — is not used.
 Mark : * reference model was also changed.
 Mark : ← is same as left.

Section 5 Parts list

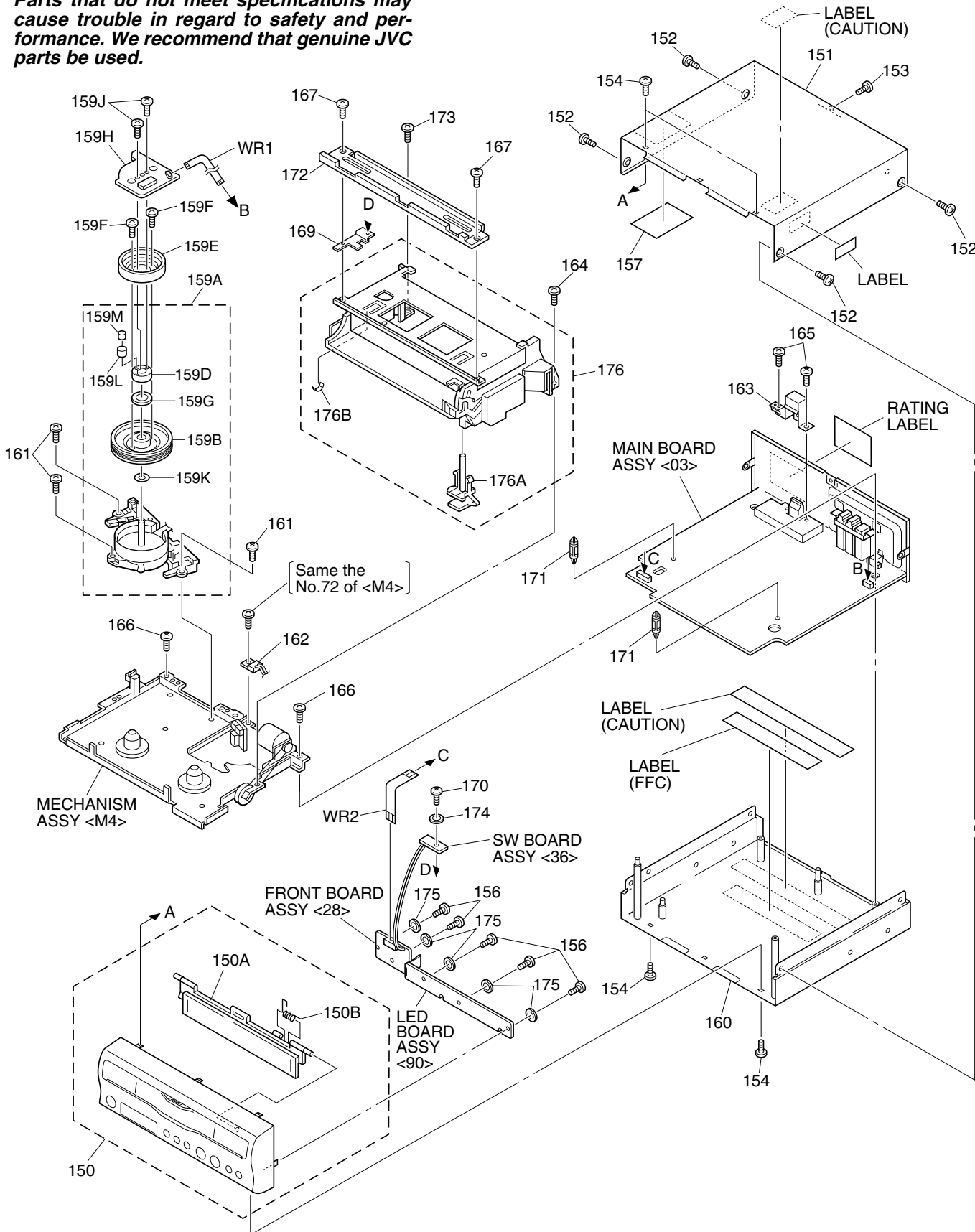
SAFETY PRECAUTION

Parts identified by the \triangle symbol are critical for safety. Replace only with specified part numbers.

5.1 Cabinet and chassis assembly <M2>

BEWARE OF BOGUS PARTS

Parts that do not meet specifications may cause trouble in regard to safety and performance. We recommend that genuine JVC parts be used.



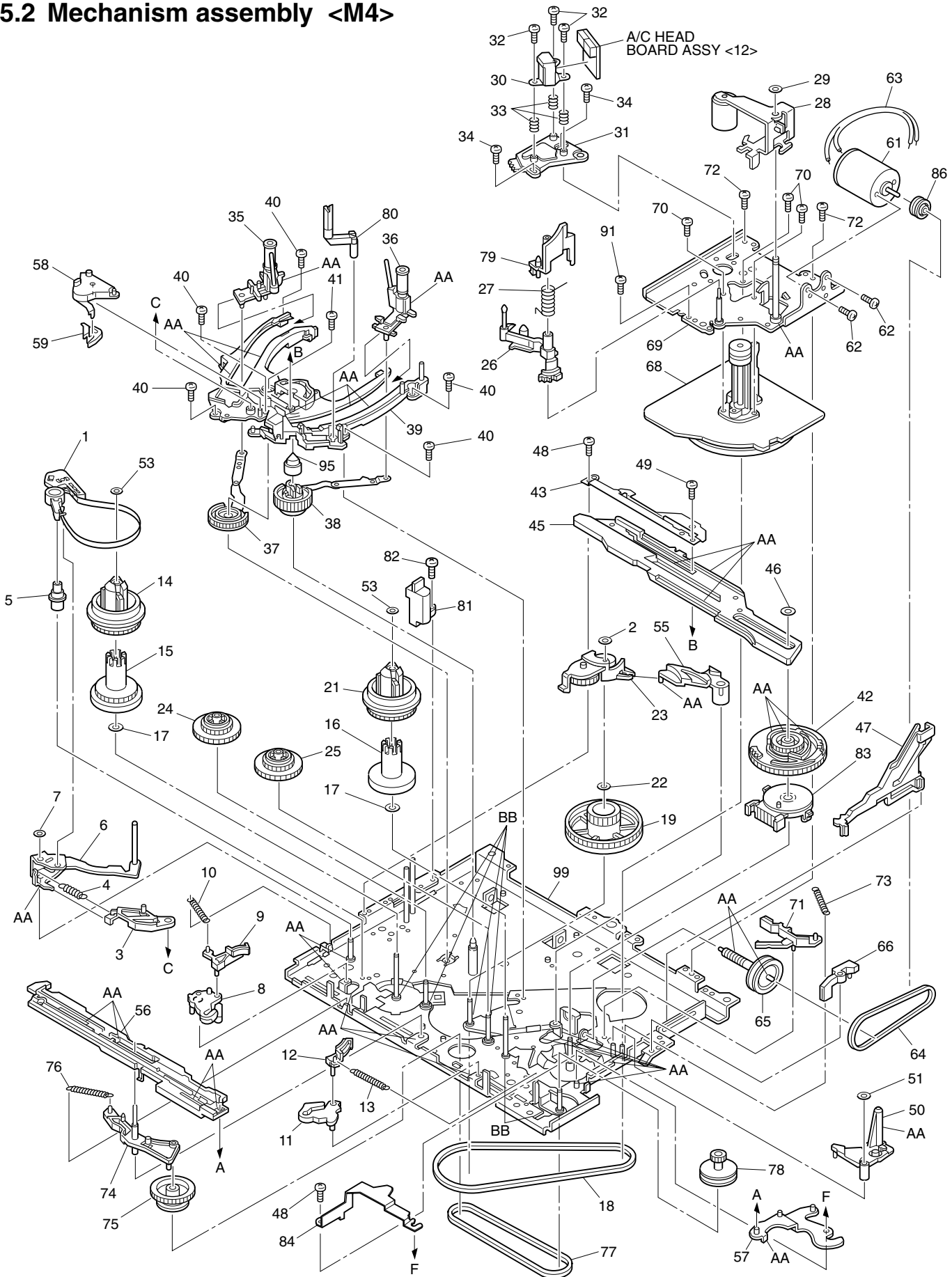
Δ REF No. PART No. PART NAME, DESCRIPTION

Δ REF No. PART No. PART NAME, DESCRIPTION

Cabinet and chassis assembly <M2>

Δ	150	LP20101-001K	FRONT PANEL ASSY
	150A	LP20156-001D	CASSETTE DOOR
	150B	PQ46448-2	TORSION SPRING
Δ	151	LP10040-001C	TOP COVER
	152	SDST3008M	SCREW,X4 TOP COVER(SIDE)
	153	SDST3008M	SCREW,TOP COVER(REAR)
	154	LP40173-001A	SPECIAL SCREW,X4 TOP/BOTTOM
	156	SDSF2608Z	SCREW,X5 FRONT/LED BOARD
	157	LP30002-017A	SPACER,TOP COVER
	159A	LP20053-001A	DRUM SUB ASSEMBLY
	159B	LP20030-001A	UPPER DRUM ASSEMBLY
	159D	LP40572-001A	COLLAR ASSEMBLY
	159E	QAR0002-003	ROTOR ASSEMBLY
	159F	QYSPSP3006Z	SCREW,X2
	159G	PDM4439	CAP
	159H	QAR0003-005	STATOR ASSEMBLY
	159J	QYSPSPH2606Z	SCREW,X2
	159K	PDM4444-19-2	WASHER
	159L	LP40323-001A	CONTACT
	159M	LP30004-014A	COMPRES.SPRING
Δ	160	LP10038-001D	BOTTOM CHASSIS ASSY
	161	SPST2608Z	SCREW,X3 DRUM
	162	PESC1422	DEW SENSOR
	163	PQ35385-1-2	SHIELD COVER,PRE
	164	SDST2610Z	SCREW,CASS.HOUSING
	165	SDST2606Z	SCREW,X2 PRE
	166	SDST4010Z	SCREW,X2 MECHANISM
	167	QYTDST3010Z	SCREW,X2 CASSETTE HOUSING
	169	LP40079-001A	SWITCH BRACKET
	170	QYSPSPT2035M	SCREW,SWITCH BRACKET
	171	PEME0947-01-01	SPACER,X2
	172	LP30470-001A	STAY,CASSETTE HOUSING
	173	SPST2606Z	SCREW,CASSETTE HOUSING
	174	WLS2000N	WASHER
	175	WLS3000N	LOCK WASHER,X5
	176	PUS29724G	CASSETTE HOUSING ASSY
	176A	PQ46359-1-2	CASSETTE SWITCH PIN
	176B	LP40154-001A	SPRING COVER,CASS.HOUSING
	WR1	PW30803-0524	FFC WIRE,DRUM
	WR2	WJT0016-001A	FFC WIRE,FRONT BOARD

5.2 Mechanism assembly <M4>



Classification	Part No.	Symbol in drawing
Grease	KYODO-SH-P	AA
Oil	COSMO-HV56	BB

NOTE:The section marked in **AA** and **BB** indicate lubrication and greasing areas.

#	△ REF No.	PART No.	PART NAME, DESCRIPTION

Mechanism assembly <M4>			
1		LP40006-001C	TENSION BAND ASSEMBLY
2		PQM30017-34	SLIT WASHER
3		PQ35012-1-5	TENSION ARM LEVER
4		PQM30001-385109	TENSION SPRING
5		LP30103-001B	ADJUST PIN
6		PQ46303B-8	TENSION ARM ASSEMBLY
7		PQM30017-47	SLIT WASHER
8		PQ46305B-3	MAIN BRAKE ASSEMBLY (SUPPLY)
9		PQ46306A-6	SUB BRAKE ASSEMBLY (SUPPLY)
10		PQM30001-393	TENSION SPRING
11		PQ46308A-5	MAIN BRAKE ASSEMBLY (TAKE UP)
12		PQ46309A-4	SUB BRAKE ASSEMBLY (TAKE UP)
13		PQM30001-389102	TENSION SPRING
14		PQ46551B	REEL DISK ASSEMBLY (SUPPLY)
15		PQ35436	SLIT DISK (SUPPLY)
16		PQ35437	SLIT DISK (TAKE UP)
17		PQM30018-76	SPACER,X2
18		PQM30003-38	BELT (CAPSTAN)
19		PQ46497B-2	PULLEY ASSY
21		PQ46551B	REEL DISK ASSEMBLY (TAKE UP)
22		PQM30018-69	SPACER
23		PQ46312C-15	IDLER ARM ASSEMBLY
24		PQ46316F	CLUTCH UNIT (SUPPLY)
25		PQ46323A-1	CLUTCH UNIT (TAKE UP)
26		PQ46325D	GUIDE ARM ASSEMBLY
27		PQ46326-2	TORSION SPRING
28		PQ46327A-4	PINCH ROLLER ARM ASSEMBLY
29		PQM30017-24	SLIT WASHER,P LEVER
30		PEHE0182	AUDIO CONTROL HEAD
31		PQ35206-1-3	HEAD BASE
32		PQ43687A	SCREW,X3
33		PQM30002-192	COMPRESSION SPRING,X3
34		SDSP2604Z	SCREW,X2
35		PQ46595C	POLE BASE ASSEMBLY (SUPPLY)
36		PQ46331F	POLE BASE ASSEMBLY (TAKE UP)
37		PQ46332B-3	LOADING ARM ASSEMBLY (SUPPLY)
38		PQ46337C	LOADING ARM ASSEMBLY (TAKE UP)
39		PQ11657-1-9	GUIDE RAIL
40		SPST2608Z	SCREW,X5
41		SDST2612Z	SCREW
42		LP20003-001A	CONTROL CAM
43		PQ35138-3	CONTROL BRACKET
45		LP10004-001E	CONTROL PLATE
46		PQM30017-8	SLIT WASHER
47		PQ21685-2-10	PINCH PLATE
48		SPST2606Z	SCREW,X2
49		SPSF2608M	SCREW
50		PQ46342B-10	LEVER ASSEMBLY
51		PQM30017-8	SLIT WASHER
53		PQM30017-47	SLIT WASHER,X2
55		PQ35026-1-7	IDLER LEVER
56		PQ11659-2	SLIDE PLATE
57		LP40014-001A	CHANGE LEVER ASSEMBLY
58		PQ21686-1-3	TAKE UP LEVER
59		PQ46345-1-2	TAKE UP HEAD
61		QAR0023-001	LOADING MOTOR
62		SPSP3003Z	SCREW,X2

#	△ REF No.	PART No.	PART NAME, DESCRIPTION
63		PW30101-80AJ632	WIRE ASSY
64		LP30005-002A	BELT
65		PQ46395B	WORM GEAR ASSEMBLY
66		PQ21699-1-2	WORM BEARING
68		PU61487-2-6	CAPSTAN MOTOR
69		PQ46347F-17	SUB DECK ASSEMBLY
70		SPSG2608Z	SCREW,X3
71		PQ46356C-4	CAPSTAN BRAKE ASSEMBLY
72		SPST2606Z	SCREW,X2
73		LP30003-005A	TENSION SPRING,CAPSTAN BRAKE
74		PQ46353B	CHANGE ARM ASSEMBLY
75		PQ46354	CHANGE GEAR
76		PQM30001-386	TENSION SPRING
77		PQM30003-40	BELT
78		LP40008-001B	CASSETTE GEAR
79		PQ35030-3	LID GUIDE
80		LP20032-001A	LED PRISM
81		PEHE0237	FULL ERASE HEAD
82		SDST2610Z	SCREW
83		PU61432-1-2	ROTARY ENCODER
84		PQ35217-1-2	CONTROL BRACKET 2
86		PQ43546-1-2	MOTOR PULLEY
91		SDSP2604Z	SCREW
95		PQ46767-1-2	GUIDE CAP
99		PQ21680M-24	MAIN DECK ASSEMBLY



VICTOR COMPANY OF JAPAN, LIMITED

PERSONAL & MOBILE NETWORK BUSINESS UNIT. 10-1,1Chome,Ohwatari-machi,Maebashi-city,Japan